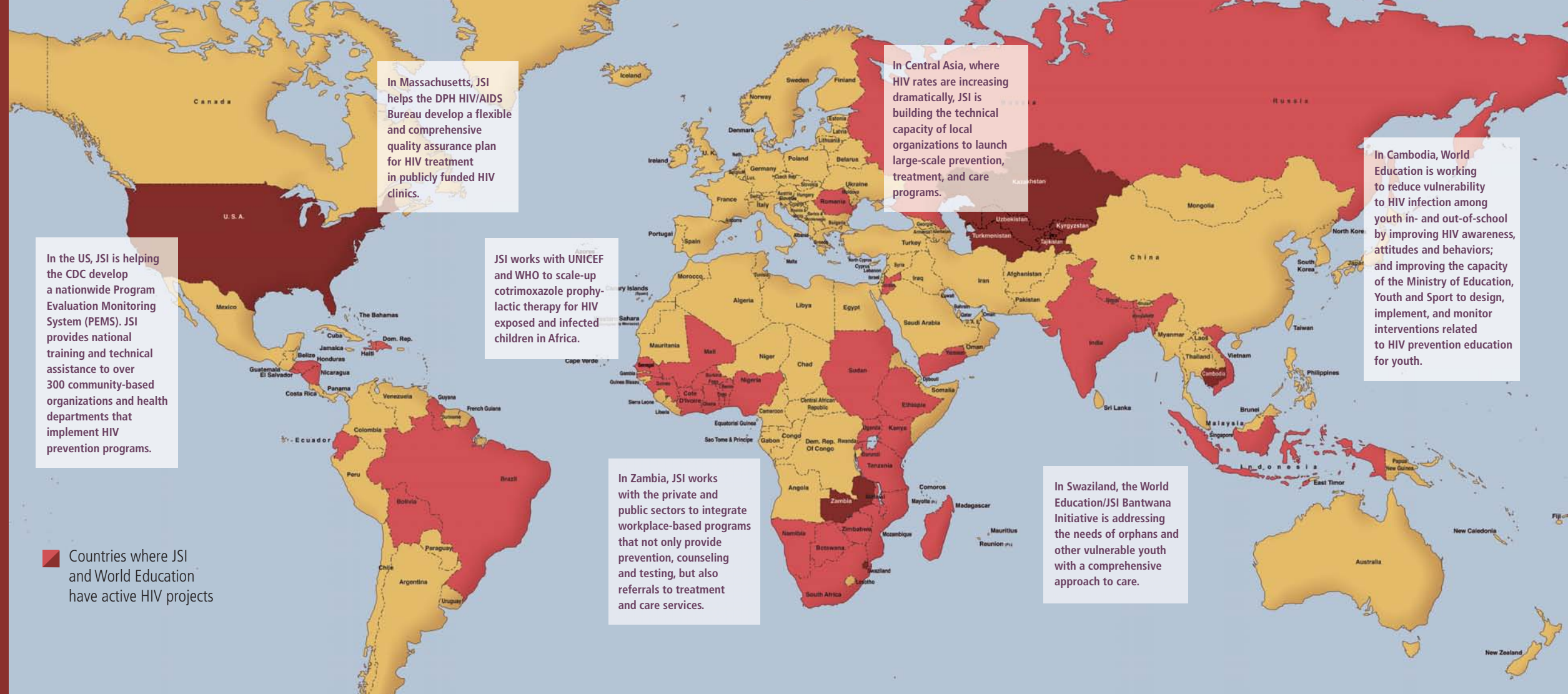


## THE JSI AND WORLD EDUCATION APPROACH TO COMBATING HIV

focuses on collaboration. With two decades of work in HIV, both in the United States and internationally, the JSI/World Education Center for HIV & AIDS and its partners work together to shape and advance programs that aim to halt the spread of HIV, and address the needs of affected individuals, households, and communities.

JSI and World Education interventions are context-specific, integrated into existing program activities, and based on the latest best practices, technology, and research—all in response to locally identified needs.

Knowledge alone cannot stop HIV. The Center therefore supports programs that change individual and community behavior, link people to critical services, and reduce stigmatization of those infected with and affected by HIV.



## JSI/WORLD EDUCATION CENTER FOR HIV AND AIDS FRAMEWORK

CENTER CORE COMPETENCIES	CENTER PRIORITIES	KEY MEASURES OF SUCCESS	CENTER CORE COMPETENCIES	CENTER PRIORITIES	KEY MEASURES OF SUCCESS
<b>Service Delivery</b>	<ul style="list-style-type: none"> <li>Decentralized, integrated prevention, treatment, and support programs</li> <li>Community mobilization</li> <li>Tailored approaches for most affected and marginalized populations</li> </ul>	<ul style="list-style-type: none"> <li>Referral systems for appropriate services</li> <li>Adoption of safer sex practices</li> <li>PLHIV and affected households reached by community support and services</li> </ul>	<b>Supply Chain Management</b>	<ul style="list-style-type: none"> <li>Commodity security</li> <li>Customer-oriented logistics systems</li> <li>Tools &amp; procedures for commodity management</li> <li>Supply chain data used for decisionmaking</li> </ul>	<ul style="list-style-type: none"> <li>Improved commodity availability</li> <li>Enabling policy environment for supply chain decisionmaking</li> <li>Fewer stockouts of key commodities (ARV drugs, HIV test kits)</li> </ul>
<b>Institutional Capacity Building</b>	<ul style="list-style-type: none"> <li>Human resource development</li> <li>Participatory training</li> <li>Performance improvement programs</li> <li>Organizational development</li> <li>Quality improvement</li> <li>Comprehensive local planning</li> </ul>	<ul style="list-style-type: none"> <li>Human resource needs met</li> <li>Process of care improved</li> <li>Organizational &amp; governance systems in place</li> <li>Improved clinical outcomes</li> <li>Health care workers able to provide prevention, treatment, and support services</li> </ul>	<b>Monitoring &amp; Evaluation</b>	<ul style="list-style-type: none"> <li>Performance of national HIV M&amp;E system</li> <li>Program assessment, including quality of care</li> <li>Individual &amp; organizational capacity building</li> <li>Routine HIS &amp; surveillance systems</li> <li>Data collection &amp; survey tools</li> <li>Using data for decisionmaking</li> </ul>	<ul style="list-style-type: none"> <li>Evidence-based programs</li> <li>Well-performing national HIV M&amp;E systems</li> <li>Skilled data collectors, analysts, &amp; users</li> <li>Timely and accurate reporting</li> </ul>
<b>Changing Behavior</b>	<ul style="list-style-type: none"> <li>Client-centered support for prevention, treatment, and care</li> <li>Peer education</li> <li>Engaging media</li> <li>Interpersonal interventions</li> </ul>	<ul style="list-style-type: none"> <li>People know their HIV status</li> <li>HIV-positive people enter care</li> <li>Fewer missed clinical visits</li> <li>At-risk people change behavior</li> <li>PLHIV report less stigma</li> </ul>	<b>Public-private Partnerships</b>	<ul style="list-style-type: none"> <li>Collaboration</li> <li>Workplace-based programs</li> <li>Workplace policy development</li> </ul>	<ul style="list-style-type: none"> <li>Referral networks between private &amp; public sectors</li> <li>District mapping and gap analysis</li> <li>Supportive workplace policies</li> <li>On-site HIV services</li> </ul>
<b>Policy Development</b>	<ul style="list-style-type: none"> <li>Evidence-based policy change</li> <li>Engaging affected populations</li> <li>Policies appropriate to available resources</li> </ul>	<ul style="list-style-type: none"> <li>Policies reflect best practices</li> <li>National policies consistent with international standards</li> <li>National policies support universal access to prevention, treatment, and care services</li> </ul>	<b>Education</b>	<ul style="list-style-type: none"> <li>Curriculum development</li> <li>Teacher training educational materials</li> </ul>	<ul style="list-style-type: none"> <li>Parental involvement</li> <li>Teachers trained</li> <li>Increased awareness among school-based youth</li> </ul>

## ILLUSTRATIVE LIST OF CLIENTS & FUNDERS

### United States

- Centers for Disease Control and Prevention (CDC)
- City Health Departments (Boston, Denver, Hartford, New Haven, Phoenix)
- County Health Department (Santa Clara, CA; Maricopa, AZ)
- Delaware Health Care Commission
- Health Resources and Services Administration (HRSA)
- Office of HIV/AIDS Policy
- Office of Population Affairs
- State Departments of Health (CA, CO, MA, NY, NH, RI)

### International

- Bill & Melinda Gates Foundation
- Centers for Disease Control & Prevention (CDC)
- Columbia University
- Elizabeth Glaser Pediatric AIDS Foundation
- Global Fund to Fight AIDS, TB & Malaria
- Harvard University
- Japan International Cooperation Agency (JICA)
- New York AIDS Institute
- Open Society Institute
- Pfizer
- The World Bank
- UN Children's Fund (UNICEF)
- UN Development Program (UNDP)
- U.S. Agency for International Development (USAID)
- U.S. Department of Labor (USDOL)



**JSI/WORLD EDUCATION CENTER FOR HIV & AIDS** bridges the U.S.-international divide, shares learning across communities and countries, and addresses the epidemic using a comprehensive community-based approach. The Center promotes an integrated approach linking prevention, treatment, and support—an essential triad—to meet the complex needs of people at risk for acquiring HIV, those living with the virus, and those affected by its consequences. Rather than focusing on a single aspect of the epidemic, we engage with partners across the spectrum of interventions that will fully meet the needs of clients, providers, and program managers to ensure and strengthen a continuum of care.

### GUIDING PRINCIPLES

All Center activities apply the following principles:

1. Active participation of project beneficiaries, including those infected with and affected by HIV and AIDS, so that programs are relevant and locally-owned.
2. Internal and external partnership and collaboration.
3. Multisectoral approaches that address the underlying economic, social, and cultural factors that increase individual, family, and community vulnerability to HIV.
4. Commitment to building individual and institutional capacity.
5. Advocacy to improve the HIV and AIDS policy environment.

For specific information on JSI and World Education programs, publications, and tools, please visit us at [www.jsi.com](http://www.jsi.com) and [www.worlded.org](http://www.worlded.org).



**JSI/WORLD EDUCATION**  
Center for HIV & AIDS

44 Farnsworth St., Boston, MA 02210.1211 USA

Phone: 617.482.9485 • Fax: 617.482.0617

[www.jsi.com](http://www.jsi.com) • [www.worlded.org](http://www.worlded.org)

E-mail: [HIV/AIDS@jsi.com](mailto:HIV/AIDS@jsi.com)

JSI/WORLD EDUCATION



CENTER  
*for* HIV  
& AIDS



*Building the capacity  
of public and private  
sectors to provide better  
HIV & AIDS services*